

Use recommendations

ARC

CODIPROLUX SA
25, Salzbaach L-9559 Wiltz
Tel : +352 26 81 54 1 • Fax : +352 81 05 17
www.codipro.net • info@codipro.net



SCOPE

These instructions apply to the ARC50 lifting point manufactured by Codipro.

PRODUCT DESCRIPTION

The lifting point is composed of a lifting arch, and two M64-screws intended to bolt the arch onto the load. The working load limit is 50t with a safety factor of 5 with regards to the rupture, or 63t with a safety factor of 4. The lifting point has been especially designed for use with the neo50 automated hook from Elebia. Its compatibility with standard hooks or shackles can obviously be confirmed or investigated on request.

CONFORMITY

The lifting point complies with the European Directive 2006/42/EC. It is delivered with an EC declaration of conformity. It complies with Codipro specifications. The safety factor with regards to deformation is > 2.5 , and the safety factor with regards to rupture is > 5 . The certification is only valid for lifting points that are manufactured by Codipro, and which are therefore compliant with Codipro specifications. Any modification brought to the equipment without the written permission of Codipro invalidates the certificate of conformity.

CONDITIONS OF USE

The equipment must be handled by capable and trained people, in accordance with the standards in force where operations take place. It is prohibited to pass under a suspended load and/or to expose staff in the handling area. During handling, avoid any dangerous operation: shock, tug, vibrations. Scrupulously follow the WLL engraved on the accessory. All elements connected with the accessory must be compatible with the WLL and designed in accordance with the standards in force.

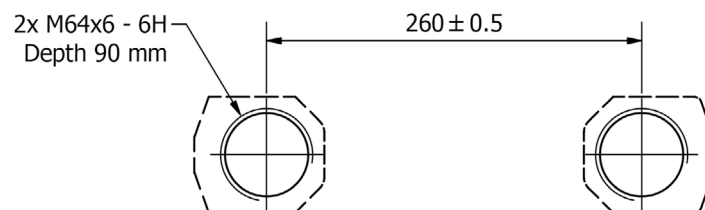
Proceed to the adequacy inspection of the accessory in relation to its use:

- Check that the head loss of the accessory assembly plus the load ensures safe lifting.
- Use the lifting points on the load that are located above the center of gravity to avoid it tilting.
- Check the correct displacement of the accessory / load / fastening point assembly to avoid any deterioration.
- Identify the path followed by the load clear the aisles and area to place the load.
- Never stand between the load and an obstacle or a wall.

Avoid using in corrosive, aggressive and/or sandy, chemical, acidic or steamy areas. Equipment designed for use at a temperature between -20°C and $+100^{\circ}\text{C}$. Do not use outside this temperature range. ARC is certified for a maximum of 10 000 cycles. Please contact the manufacturer for any specific use and/or additional information.

MOUNTING INSTRUCTIONS

The ARC 50 must be installed above the center of gravity of the load in order to allow a 0° straight lift. All accessories must remain fully mobile in all directions without hindrance to movement. Please refer to the load manufacturer's instructions if any. The threaded holes that will receive the bolts must comply with European standards in force and be designed to be compatible with the WLL of the lifting point. Specifications are shown in the picture below.



The lifting point is designed for straight lift only. Do not use when vertical angle exceeds 6°. Vertical rotations are forbidden. In the case where the threaded holes are not right above the center of gravity, the position of the center of gravity might be adjusted with the addition of counterweights to the load or any other mean. The compatibility of the lifting point with the load must then of course be checked afterwards.

Please follow the assembly instructions:

1. Check each part visually prior to assembly and make sure there is no defect.
2. Put the parts together according to the configuration drawings.
3. Screw the bolt on with the dedicated tightening torque.
4. Please refer to general operating instructions for lifting

Bolt Type	Tightening torque
M64x340 mm	1000 Nm

OPERATING INSTRUCTIONS

The ARC has been especially designed for combination with the neo50 automated hook from Elebia.

1. Get a working area correctly prepared for lifting. Please refer to the equipment's manual for use.
2. Engage the lifting device inside the ARC. Refer to lifting device operating instructions.
3. Check the assembly (load + ARC + lifting device).
4. Put the lifting set in tension and start lifting slowly. Pay close attention to the motion of the whole assembly.
5. Watch out for collisions during lifting.
6. Drop off the load as slowly as possible in a suitable area.
7. Remove lifting device to release the load.

CONTROL AND MAINTENANCE

Control should always be carried out by capable and trained people in accordance with standards currently in force on the place of use. A visual control prior to each use is necessary. The following points must always be checked:

- Wear, bending, abnormal corrosion
- Assembly and articulation of movable parts
- Bolt tightening torques
- Nicks, deformation, cracks
- EC mark and engraving (WLL, traceability, manufacturer)

If one of these criteria is considered non-conform, the material must be subject to a more thorough examination. A thorough verification must be performed once a year for normal use, several times a year in case of intensive use.

STORAGE

Store the system on a dedicated support. Regularly clean the accessory (use cloth and water only). Lightly grease uncoated areas to avoid corrosion in case of long-term storage.